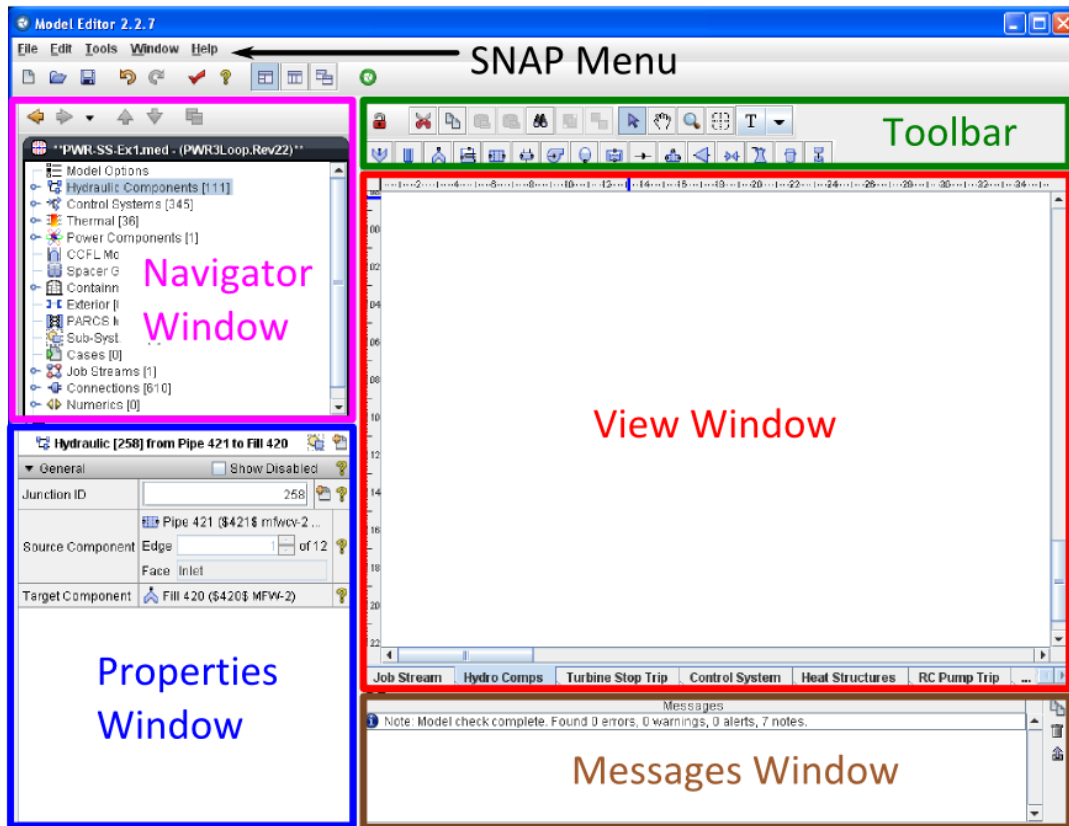


# Exercise Key

The TRACE exercises for this workshop refer to different parts of the SNAP Model Editor. The different parts of the Model Editor are indicated below:



Comment blocks are also used in the exercises. The purpose of each of the different types of comment block is indicated below:



Idea blocks include helpful ideas or hints that have proven useful in modeling.



Warning blocks highlight potential problems or areas where one must be careful.



Information blocks provide information or explanations that may be useful.



Completion blocks indicate when a goal of the exercise has been completed.